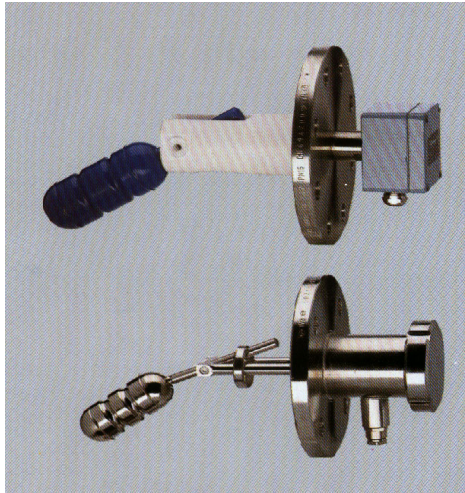




# KSR Horizontal Level Switch Type HIF - ... / ... – VU – .. / ...



### Technical Data:

Terminal box : Aluminium, Stainless steel

Process connection : to customer specification

Switch : Reed contact – Change-over SPDT  
DIN EN 60947-5-6

Switch rating : max. 60 VA  
max. 250 VAC/DC

Available materials :  
Stainless steel 316Ti, titanium,  
Hastelloy C4 /B2, coatings available  
e.g. E-CTFE

Float : to customer specification

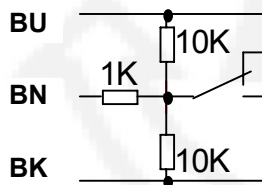
S.G. : min.  $e \geq 450 \text{ kg / m}^3$

Temperature : - 60 ...400°C,

Nominal pressure : max.160 bar / 1500 #

ATTENTION: Do not install in ferromagnetic surroundings or the immediate vicinity of strong electromagnetic fields.

### 1 Switch point - change-over (SPDT)



\* Dimensions to customer specification

